

Wellington

4919 / 10 - 30 - 40 - 60

6919 / 80 - 90

6919/80

4919/60

6919/90

4919/40

4919/10

4919/30



Wellington

6919/80

4919/60

6919/90

4919/40

4919/10

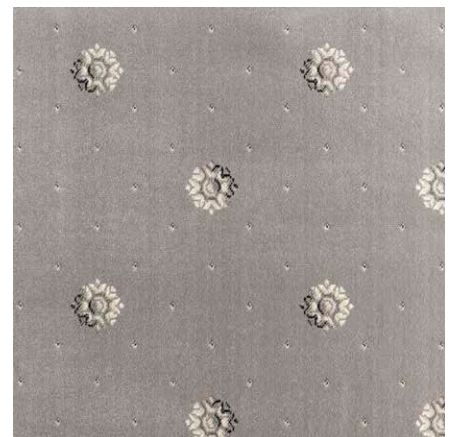
4919/30



▲ 4919/10



▲ 4919/30



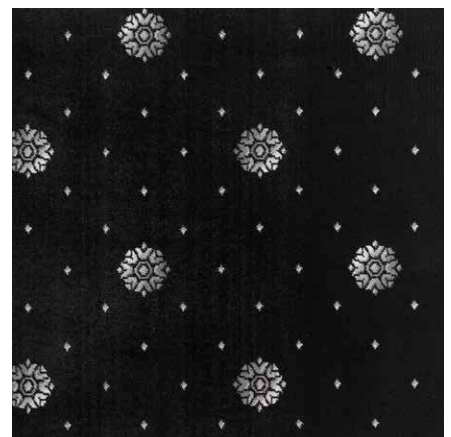
▲ 6919/80



▲ 4919/40



▲ 4919/60



▲ 6919/90

Manufacturing process	Traditionally Woven Wilton	Number of points	ca. 340.000/m²
Pile content	100% PP StainSafe®	Width	400 cm
Pile weight	ca. 1.320 gr/m²	Design Repeat	50 (W) x 50 (H) cm
Total weight	ca. 2.055 gr/m²	Light Fastness	5-6
Pile height	ca. 7,5 mm	Water resistance	4-5
Total height	ca. 10 mm	Characteristics	Heavy Domestic / Light contrast use
Shot density	50/10cm	Thermal resistance	0,13 m² K/W (Tog 1,3)
Warp rate	34/10 cm	Installation	Underlay and gripper rods BS5325

EN14041

CE

10

Balta Industries - Wakkensteenweg 2
BE - 8710 Sint-Baafs-Vijve

DOP: 1010#BC0AEL

Textile Floor Covering EN1307

DL NA HCHO
PCP HCHO DS

www.baltamedia.com

REG NR B111DDC9
www.pro-dis.info

GUT TESTED FOR A BETTER LIVING ENVIRONMENT

www.pro-dis.info



Onder voorbehoud van de wijzigingen van de technische specificaties - Kijk voor de uitgebreide garantievoorwaarden op www.stain-safe.com
 Sous réserve de modifications techniques - Pour le détail des conditions de garantie, rendez-vous sur www.stain-safe.com
 Unter Vorbehalt von Änderungen der technischen Daten - Detaillierte Garantiebedingungen finden Sie auf www.stain-safe.com
 All rights reserved to alter technical specifications - For detailed warranty conditions, see www.stain-safe.com

Wakkensteenweg 2, 8710 Sint-Baafs-Vijve, Belgium, T +32 (0)56 62 22 11, info@baltagroup.com, www.baltagroup.com

09/2019

